

# Delran Community Park

Recreational improvements



# Project Overview



- The property is approximately 33.4 acres and resides as Block 83, Lots 12 & 13 in Delran Township;
- Delran Township acquired the land in 2009; partially funded by Green Acres (44%) and Burlington County Open Space (17%) programs;
- This park compliments the Township's other nine (9) active municipal parks and two (2) County parks.



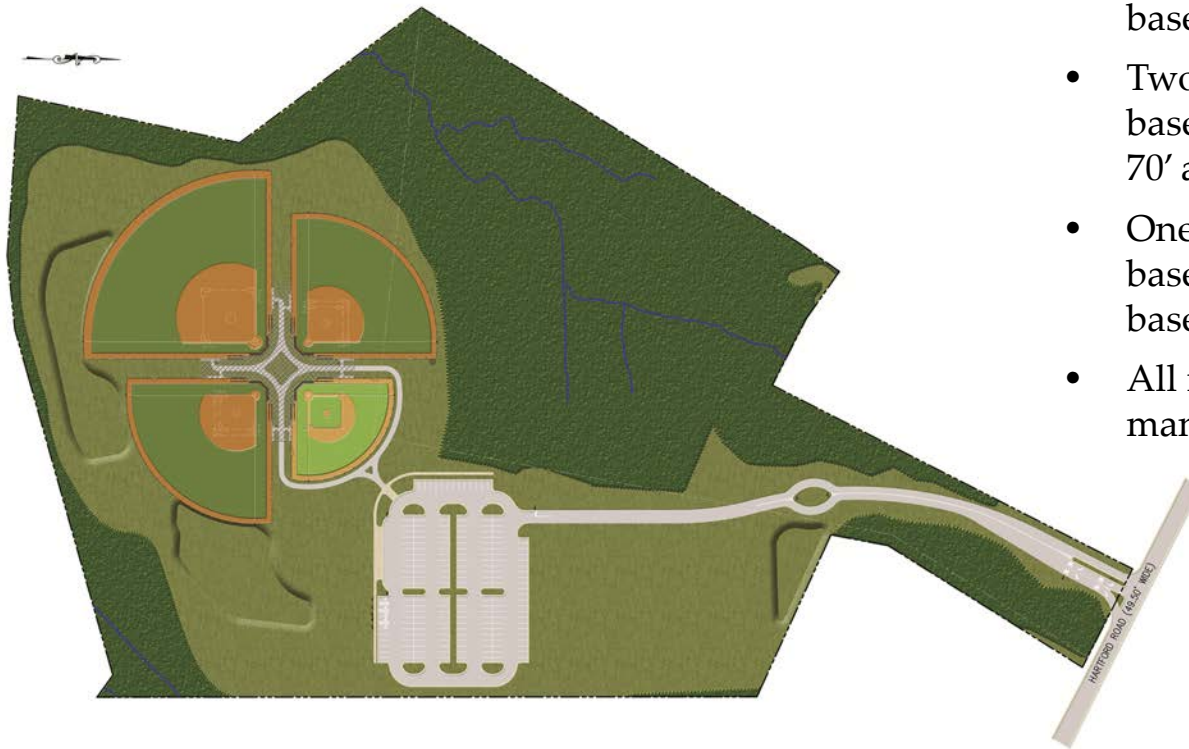
# Project Overview



- Prior to being acquired by the Township the site was used for agricultural purposes;
- The intention was to develop the site into a core sports field complex that can be utilized by the Township residents and residents of the neighboring communities;
- In late 2012 construction of the site improvements began making the Township's recreational open space master plan a reality.

# Phase 1 Improvements

- Access from Hartford Road;
- Main parking lot with 197 stalls, including 5 ADA stalls;
- One (1) 150' Synthetic ADA baseball/softball field;
- Two (2) 225' Natural Turf baseball/softball fields with 60' & 70' adjustable basepaths;
- One (1) 300' Natural Turf baseball/softball field with 90' basepaths;
- All infrastructure and stormwater management;
- \$250,000 in funding from Burlington County Park Development Grant.





# Phase 1 Improvements



# Phase 1 Improvements



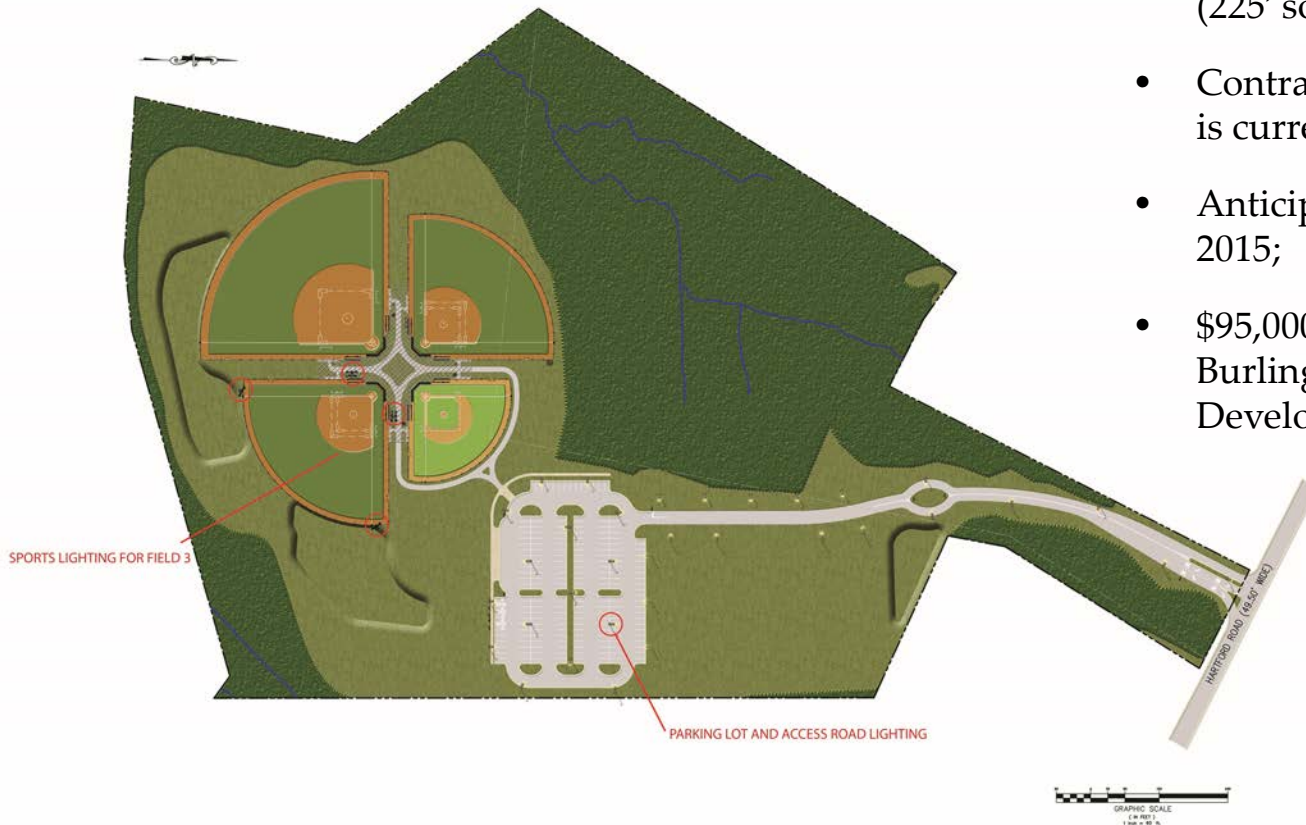
# Phase 1 Improvements





# Phase 2 Improvements

- LED lighting for parking lot and access road;
- Sports lighting system for Field 3 (225' softball field);
- Contract has been awarded and is currently under construction;
- Anticipated completion in May 2015;
- \$95,000 in funding from Burlington County Park Development Grant.





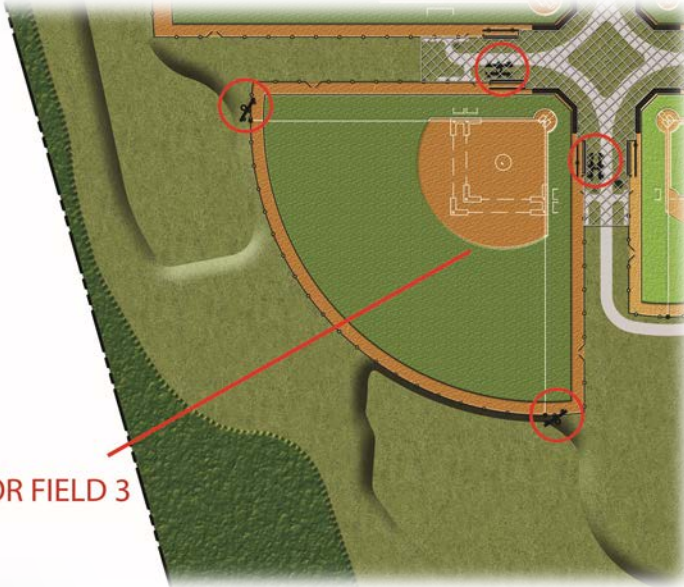
# Phase 2 Improvements



PARKING LOT AND ACCESS ROAD LIGHTING



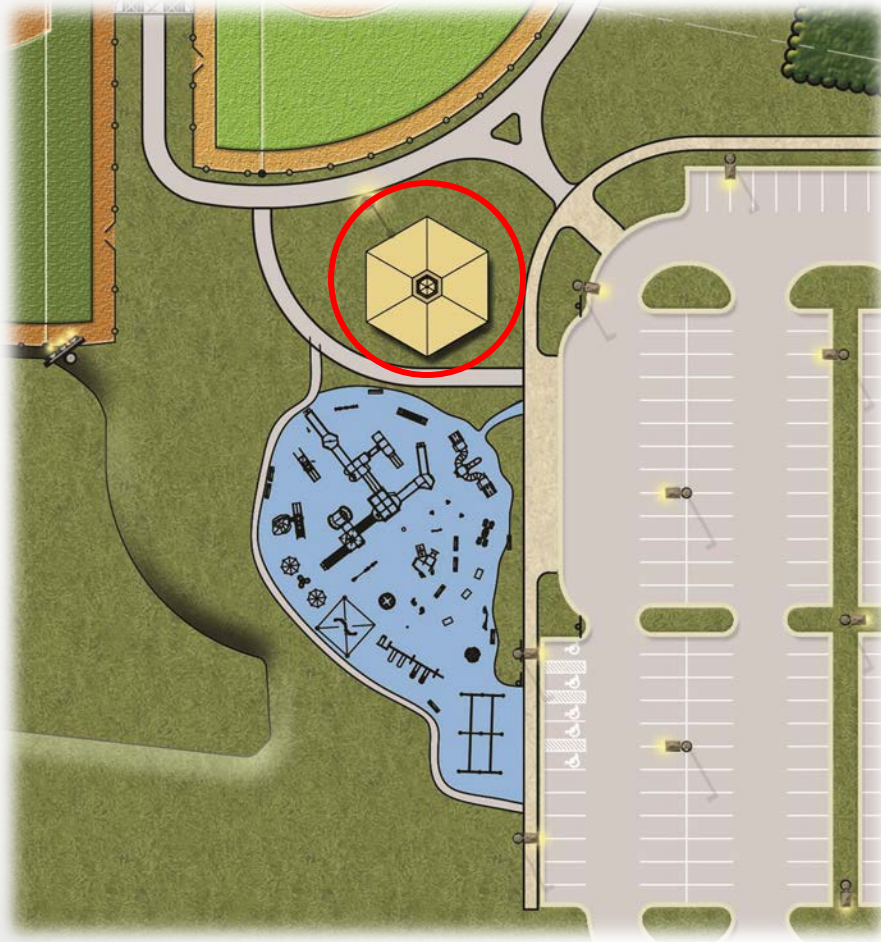
# Phase 2 Improvements



SPORTS LIGHTING FOR FIELD 3



# Phase 3 Improvements

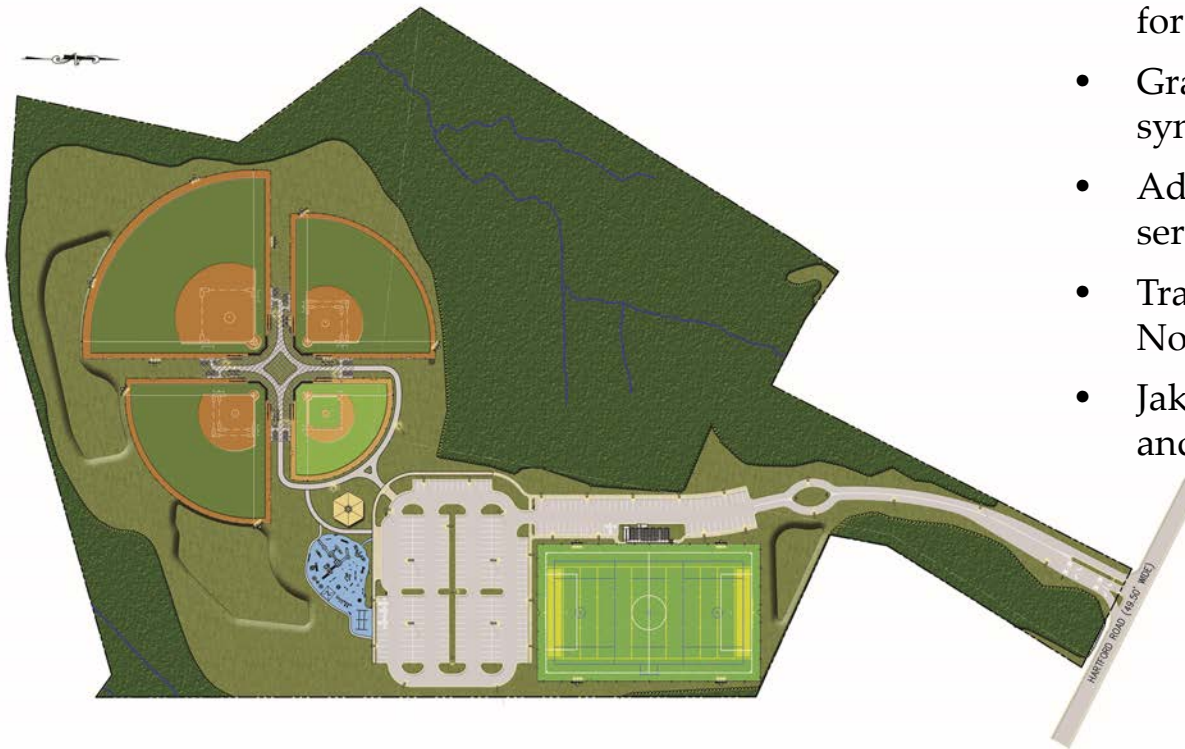


- Restroom and concession building to serve entire park;
- Infrastructure has been installed under previous phases of construction;
- The building will be a prefabricated building with a decorative shell;
- \$250,000 in funding from Burlington County Park Development Grant.



# Future Improvements

- Additional Sports Lighting for the remaining fields;
- Synthetic Multi-Purpose Field for soccer, football and lacrosse;
- Grandstand bleachers for synthetic multi-purpose field;
- Additional 67 parking stalls to service multi-purpose field;
- Trails connecting adjacent Notre Dam Park;
- Jake's Place playground area and amenities.



GRAPHIC SCALE  
1" = 100'  
1" = 30.48 M

# Future Improvements

