

Delran Township Council Meeting Presentation

MAY 2024

RANCOCAS SUBSTATION

WARREN REICHLER, PROJECT MANAGER



PSEG

We make things work for you.

Current Status

Inside Plant

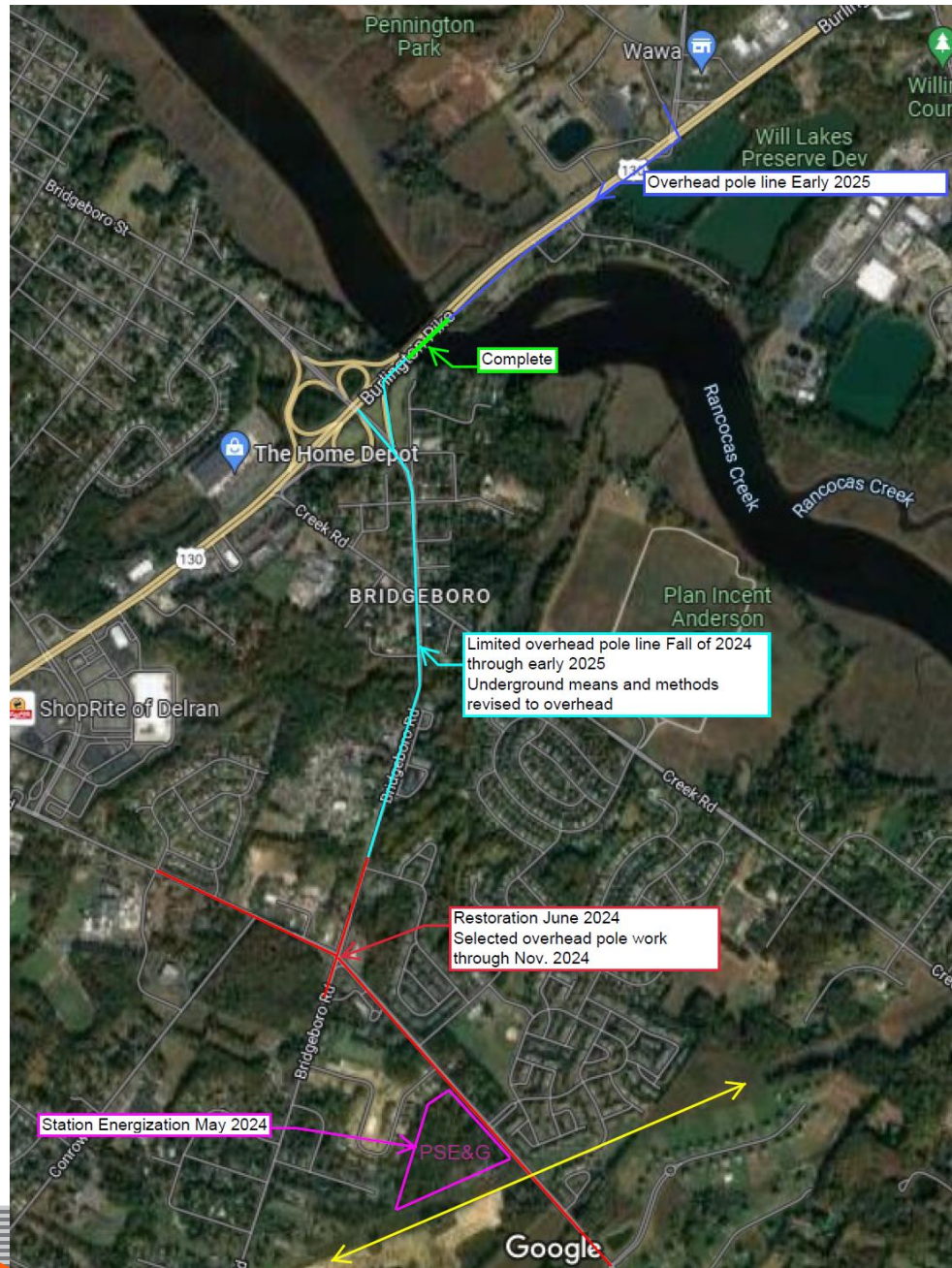
- Storm water system and utilities complete at the station
- All major equipment, buildings, and structures complete
- Testing and commissioning of the station is complete
- Station fencing and landscaping is in progress to complete June 2024
- All Outside Plant underground manholes are complete, roadway restoration is planned for second shift June 21st – June 28th
- 230kV facilities are connected to the electrical transmission system
- Rancocas Substation will carry customer load in mid-May 2024
- The balance of customer transfers to the new substation will be on going and complete Spring 2025
 - Selective overhead work will be conducted through the network on a limited basis as each circuit is reconfigures in preparation of tie-in to Rancocas Substation

Current Status

Inside Plant



Work Plan Map





Weatherly Road & Hartford Road Additional Sidewalk Restorations



PSE&G Community Outreach

Public Service Electric and Gas Company
PSE&G Electric Delivery
4000 Hadley Road
South Plainfield, NJ 07080



December 8, 2022

Dear Valued Customer,

PSE&G is currently conducting statewide electric reliability improvements to upgrade its utility infrastructure. These projects include work in existing stations, construction of new stations, and the replacement of aging equipment at these sites.

Beginning on or around Monday, December 12, 2022, PSE&G will begin preconstruction activities at the site of the new Rancocas Switching Station located at 130 Hartford Road in Delran Township. The new station will enhance the electric transmission system's reliability, while helping to ensure safe electrical service to residents, businesses and civic facilities in Delran Township and the neighboring communities.

The initial phase of activity includes; site cleanup and grading, and tree clearing near the property. Beginning in Q1 2023 the house at 130 Hartford Road will be demolished. Typical construction work hours will be between 7 a.m. and 5:30 p.m., five to six days a week with occasional Sunday work activities. During construction, there will be some unavoidable noise and potential for vibrations from the site. PSE&G will monitor all activities to ensure this work remains within acceptable limits and will work to minimize adverse impacts to the area. The duration of this phase of work is four weeks, weather permitting. Please note: PSE&G does not expect this project to cause any service interruptions.

PSE&G
We make things work for you.

We're working
in your neighborhood
to enhance electric
reliability and service.

PSE&G will begin construction shortly on the PSE&G and public rights of way in your area.

Safety is our highest priority. It is essential that you and anyone occupying your property, including children and pets, remain away from our construction work zones. Local authorities will provide traffic control to keep both our work crews and the traveling public safe during construction. We apologize for any inconvenience this may cause.

If you have any questions or concerns, please call:
1-800-606-0045
www.pseg.com/69kv

PSE&G Reliability Project

PSE&G Reliability Projects enhance electric service for you, your neighbors, and the region. Our project work is being performed in your area and we apologize for any inconvenience this may cause. If you have any questions or concerns about the project, please contact us at **1-800-606-0045** or visit www.pseg.com/69kv.



How to Reach Us

Project Hotline: 800-606-0045
Email: reliability@pseg.com
www.pseg.com/69kv